

REAL XPOSURE MARKETING

VINYL WRAPS & SIGNAGE



www.realxposure.co.za

REAL XPOSURE
marketing group

REAL XPOSURE
marketing group

**Want your business to get noticed,
then look no further!**

OUR TEAM

Our team has years of experience in the signage and printing industry. This experience allows us to provide our clients with high quality products and service at quick turn around time.

WHY SIGNAGE?

A creative, attractive sign can help your business stand apart from the competition, customers are more likely to purchase from a business they have already heard of, so a sign can help your business go further. A sign that contains a business's logo can help reinforce its brand. Signs are also used to draw attention to promotions and to convey information about the business.



082 454 1378 admin@realxposure.co.za





NEED SOMETHING NEW? TRY VINYL

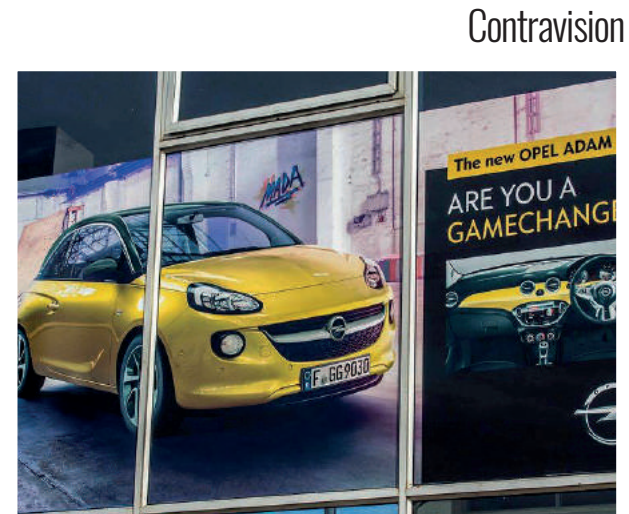
- > WINDOW DECALS
- > VEHICLE WRAPS
- > VEHICLE DECALS

VINYLS

Our in-house design team can customise vinyls to display any graphics, logos or photography that is required on windows. Transform glass into opportunities for advertising brand from one-way privacy to solar shading while retaining excellent vision through from the other side

WINDOW DECAL SIGNAGE

- > **Contravision**
- > **Vinyl Decals**
- > **Sandblasting**



Contravision



Vinyl Decals



Sandblasting

VINYLS

Vehicle wraps can create an emotive, cost-effective moving billboard, or simply give a custom look to your car or automobile. We offer semi and full wraps on almost any type of vehicle.

VECHILE WRAP

- > **Semi Wraps**
- > **Full Wraps**
- > **Truck Wraps**



Semi Wraps



Full Wraps



Truck Wraps

VINYLS

Perforated window film preventing others from seeing into your vehicle. Vehicle decals are cost effective, quick to apply and great way to increase your branding. Fleet branding is a cost-effective method of advertising and gives added value to a fleet.

VECHILE DECAL

- > Back Glass Signage
- > Vinyl Decals
- > Fleet Signage

Back Glass Signage



Vinyl Decals

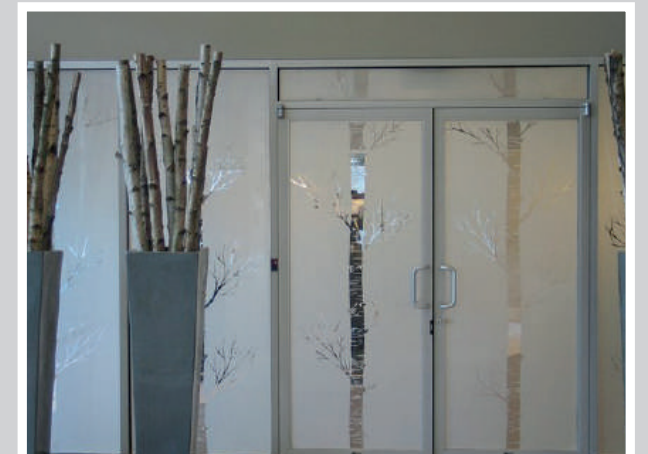


Fleet Wraps



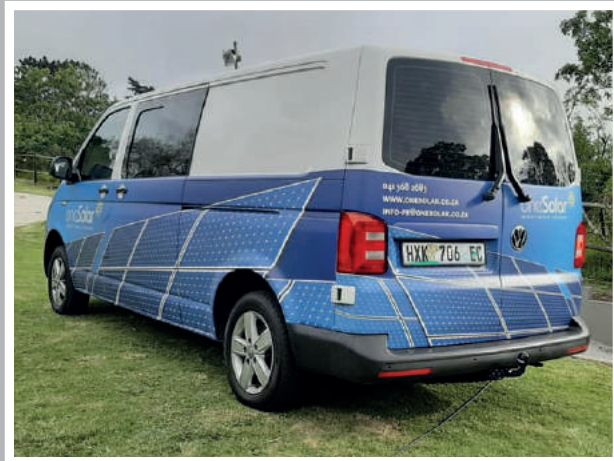
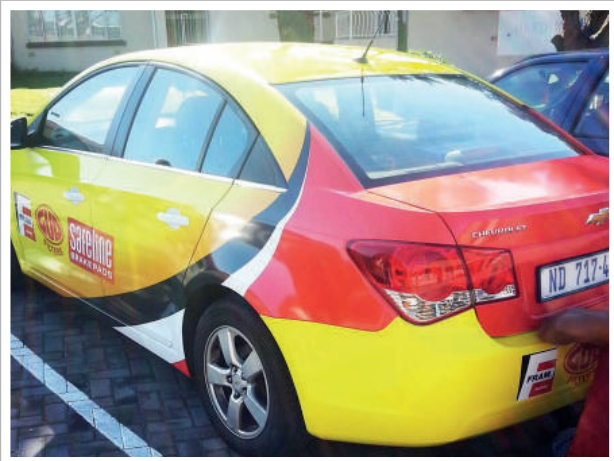
VINYLS

VARIOUS MAGES OF SUCCESSFUL PROJECTS



VINYLS

VARIOUS IMAGES OF SUCCESSFUL PROJECTS



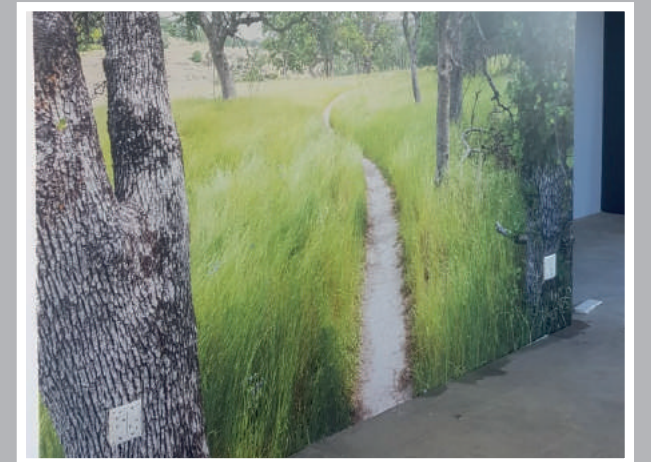
VINYLS

VARIOUS IMAGES OF SUCCESSFUL PROJECTS



VINYLS

VARIOUS IMAGES OF SUCCESSFUL PROJECTS





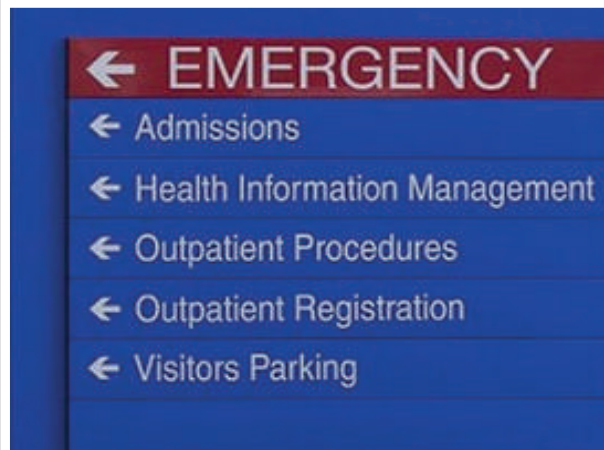
INDOOR & OUTDOOR SIGNAGE

- PYLON SIGNS
- PIN RAISED
- STEEL FRAME
- INDOOR STORE & WALL
- FABRICATED
- BILLBOARDS

SIGNAGE

Pylon Signage posts are good way to get your business noticed and usually mask an entrance or approach. They are very easy to install and maintain. This is often the best way to get your business noticed ahead of your competitors.

PYLON SIGNAGE



SIGNAGE

Chromodec is perfect for outdoor signs, Its galvanised strong & durable metal sheeting. Back Lit PVC is quick to manufacture and instal. Black Back PVC is a Fabric Stretch Frame are suited for Exhibitions, Trade Shows, Retails.

STEEL FRAME SIGNAGE

- > Chromodec
- > Back Lit PVC
- > Black Back PVC



Chromodec



Back Lit PVC



Black Back PVC



SIGNAGE

From visible light boxes to 3D illuminated 3D signs. Branding can be produced from coloured acrylic or can be printed onto vinyl which is then cut and applied to the light box panels. Light boxes are made from an enclosed frame which contains internal lighting.

FABRICATED SIGNAGE

- > Light Boxes
- > 3D Light Signs



SIGNAGE

Alu-letters signs are individually made from Aluminium and Perspex, and can even be illuminated by LED, and here you have many creative options. This type of signage gives a professional look to your building and a attractive statment for your buisness.

PIN RAISED SIGNAGE



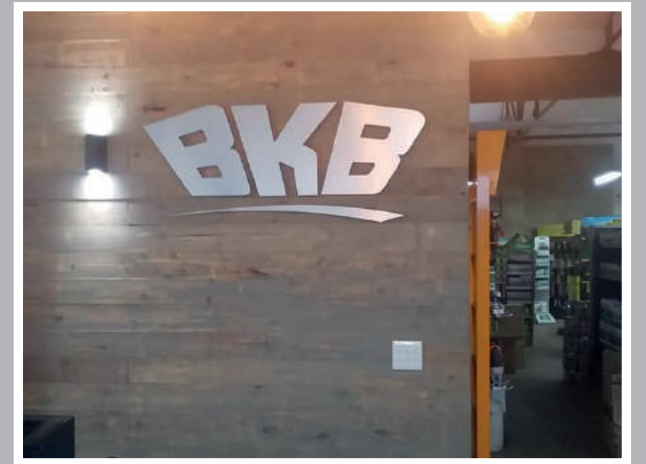
SIGNAGE

VARIOUS IMAGES OF SUCCESSFUL PROJECTS



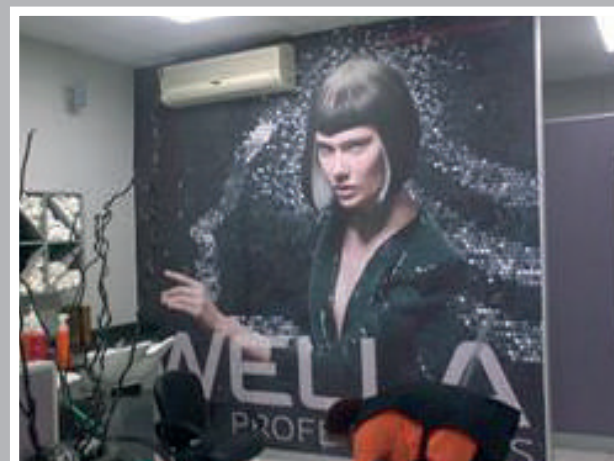
SIGNAGE

VARIOUS IMAGES OF SUCCESSFUL PROJECTS



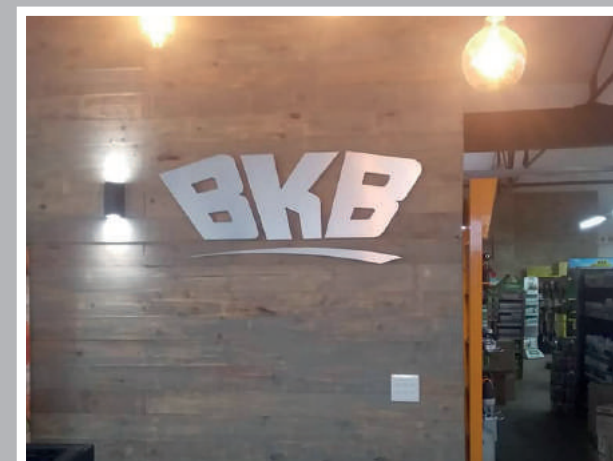
SIGNAGE

VARIOUS IMAGES OF SUCCESSFUL PROJECTS



SIGNAGE

VARIOUS IMAGES OF SUCCESSFUL PROJECTS



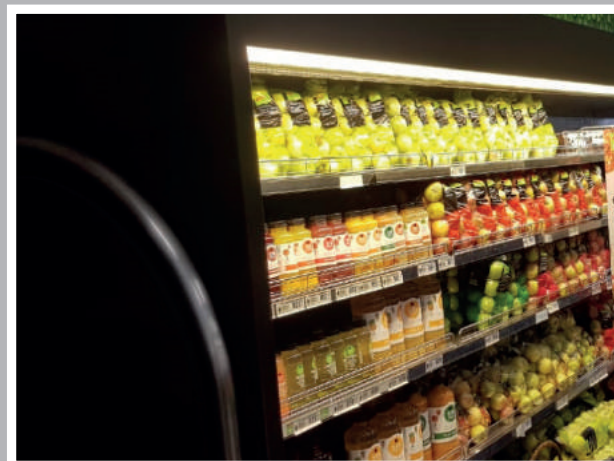
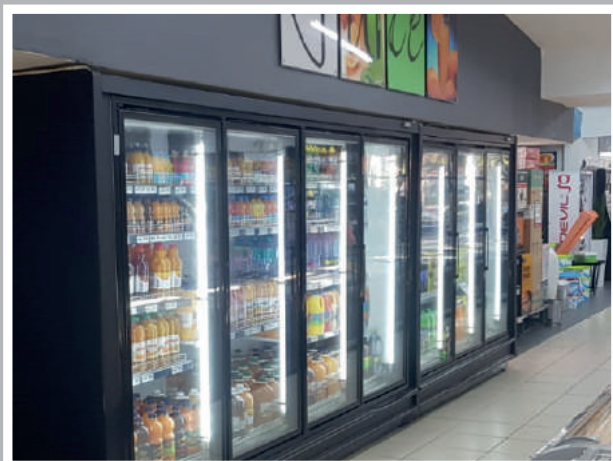
SIGNAGE

PROJECT: SPAR



SIGNAGE

PROJECT: SPAR



SIGNAGE

Safety signs are an important requirement in all business premises and workplaces, as well as shopping centres and industrial areas

SAFETY SIGNAGE

- > Site Safety
- > Caution Signs
- > Direction Signs
- > Covid Signs



SIGNAGE

